

Start



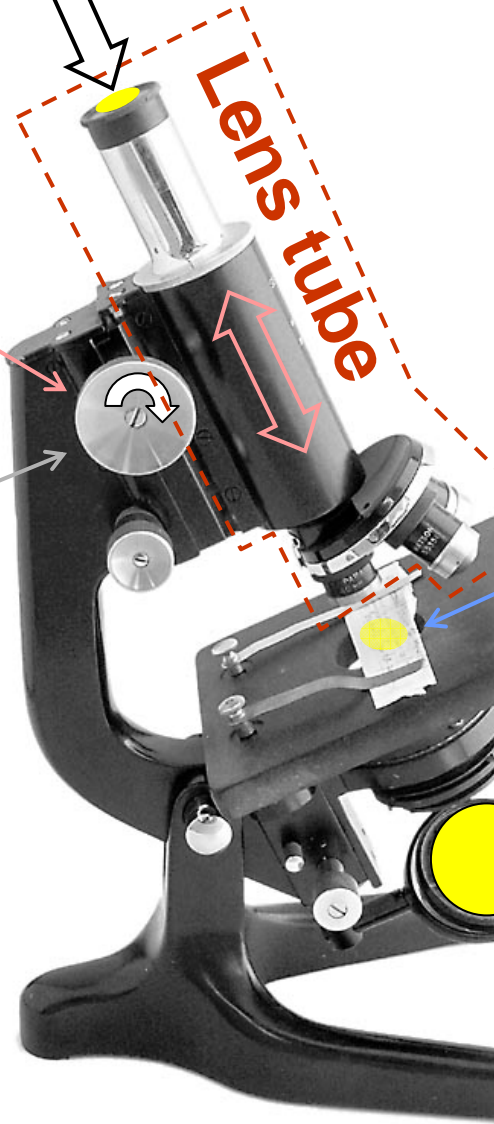
1 Turn to lift **lens tube**



4 Lower lens tube as much as possible without touching **specimen**



5 Look and **lift the lens tube** until the specimen appears in sharp focus)



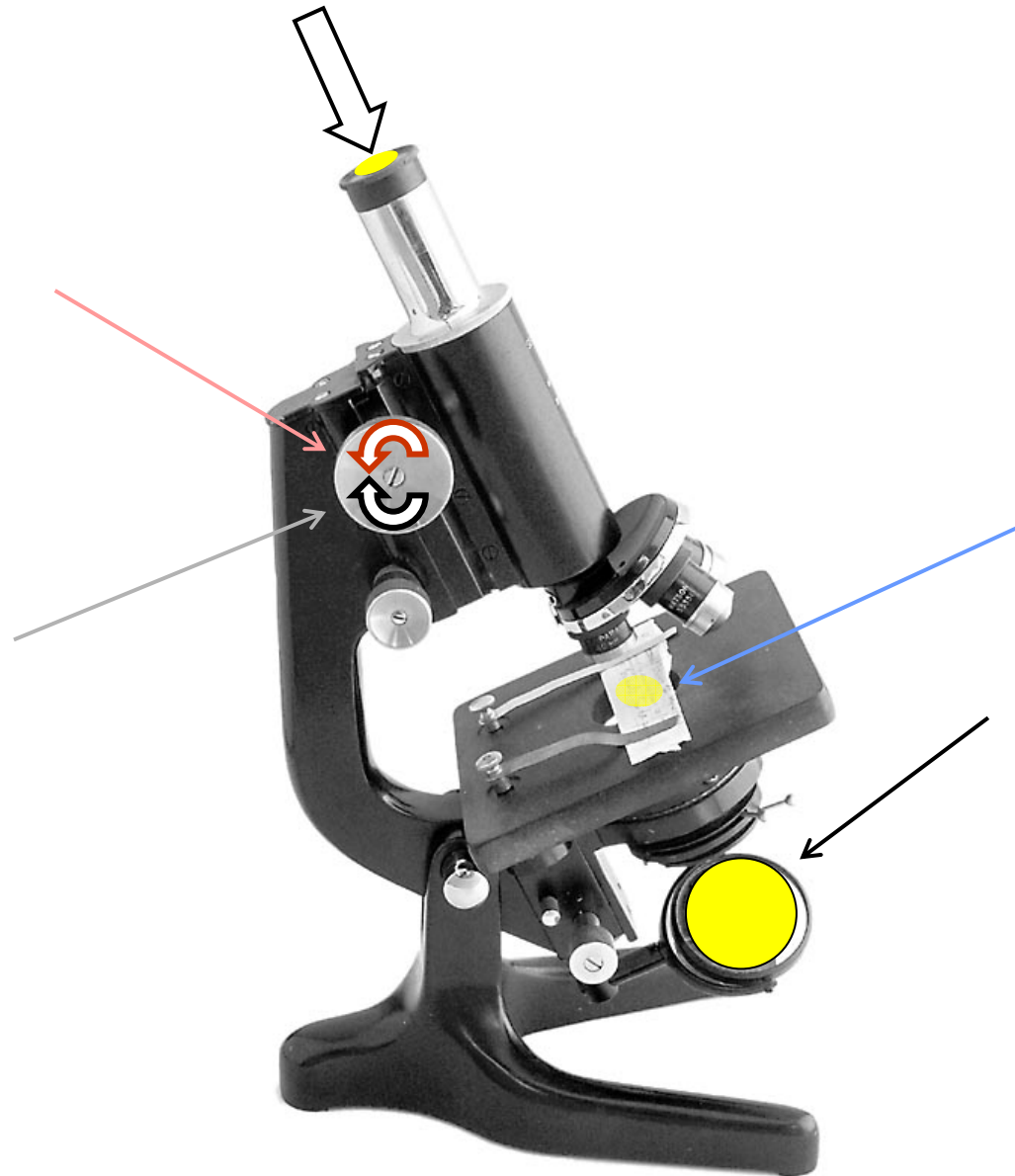
2 Fix **specimen** to stage

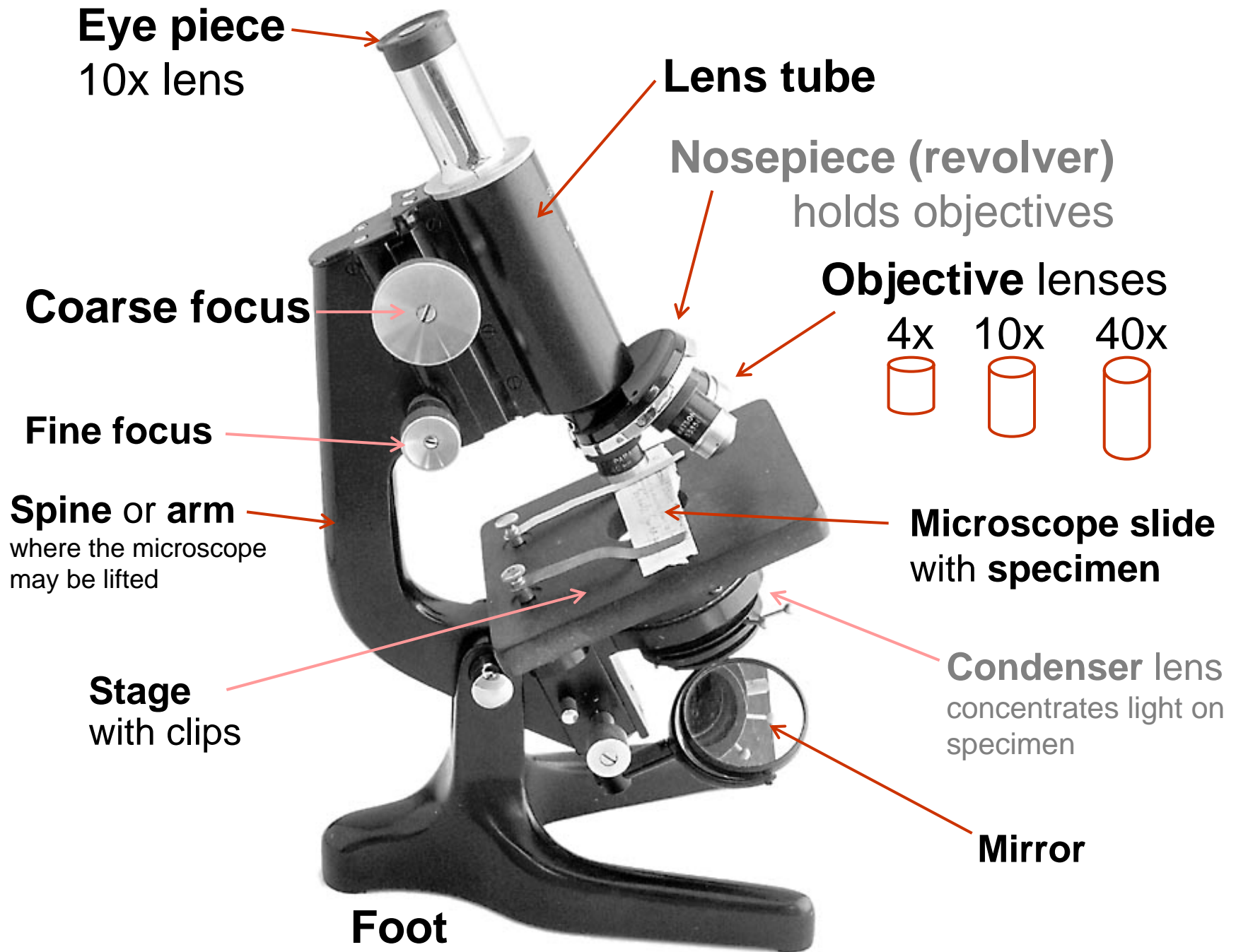
3 Adjust **mirror** to illuminate **specimen**

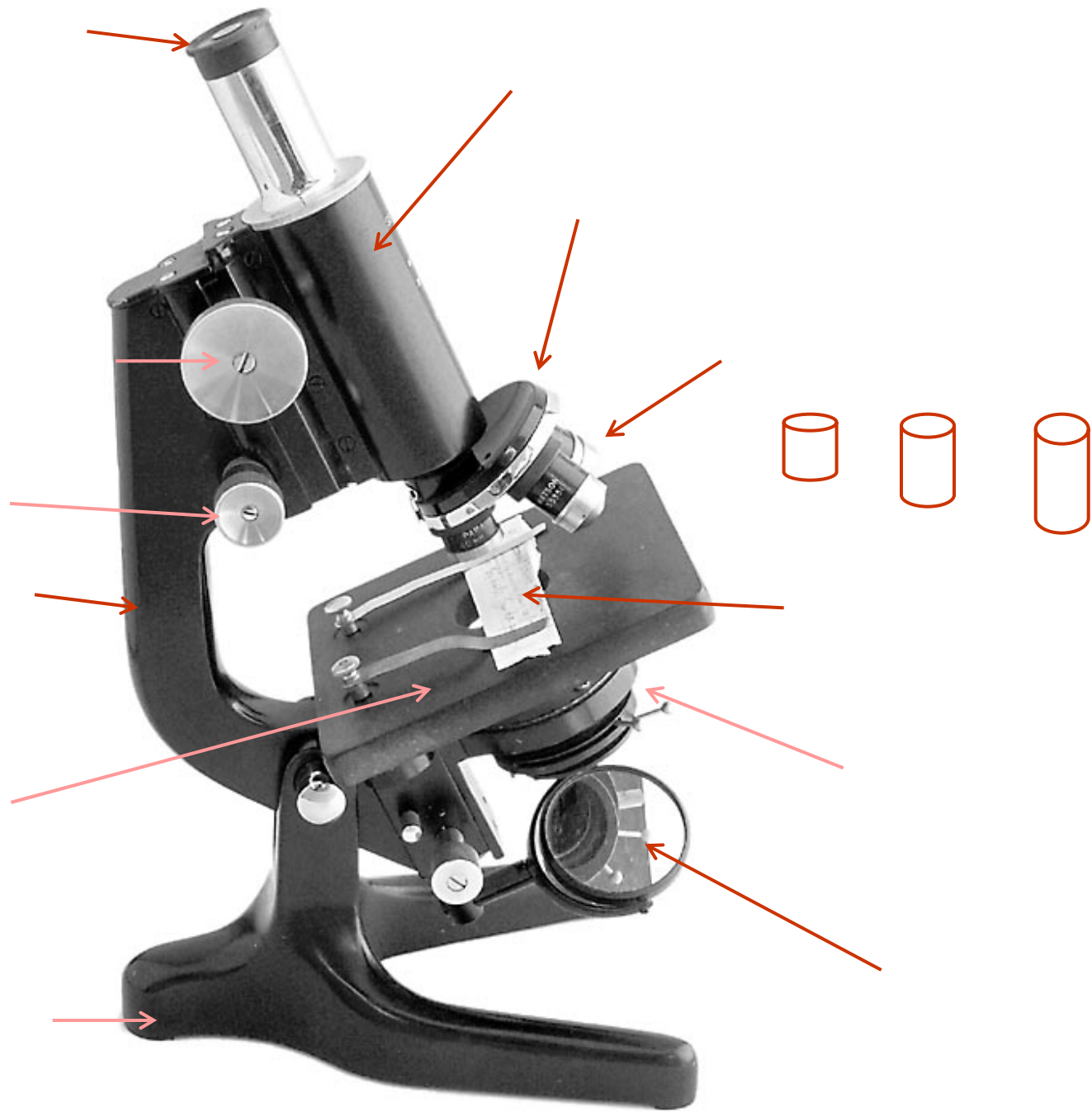
No Sun

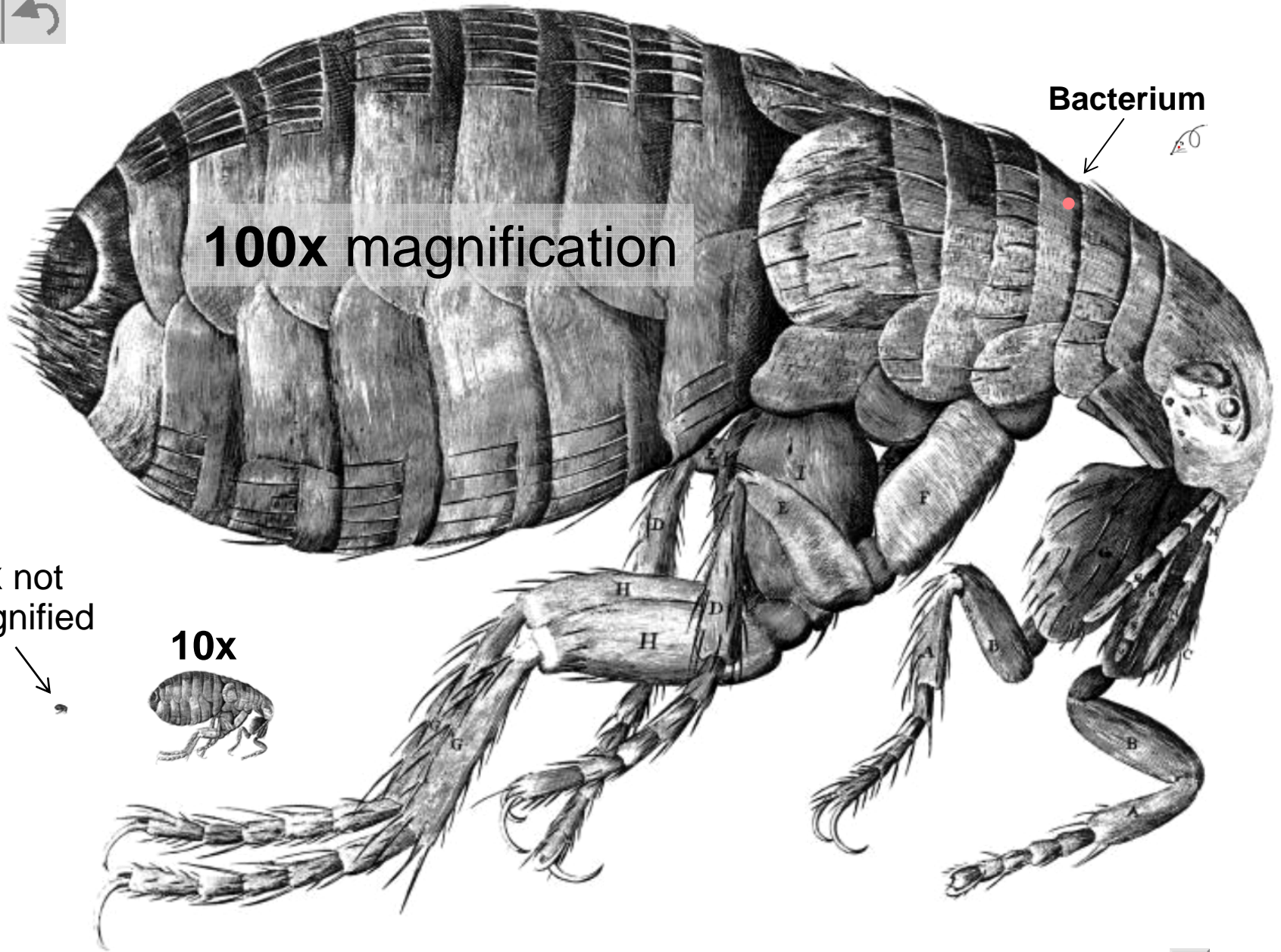


Which is the correct order for using the microscope?









100x magnification

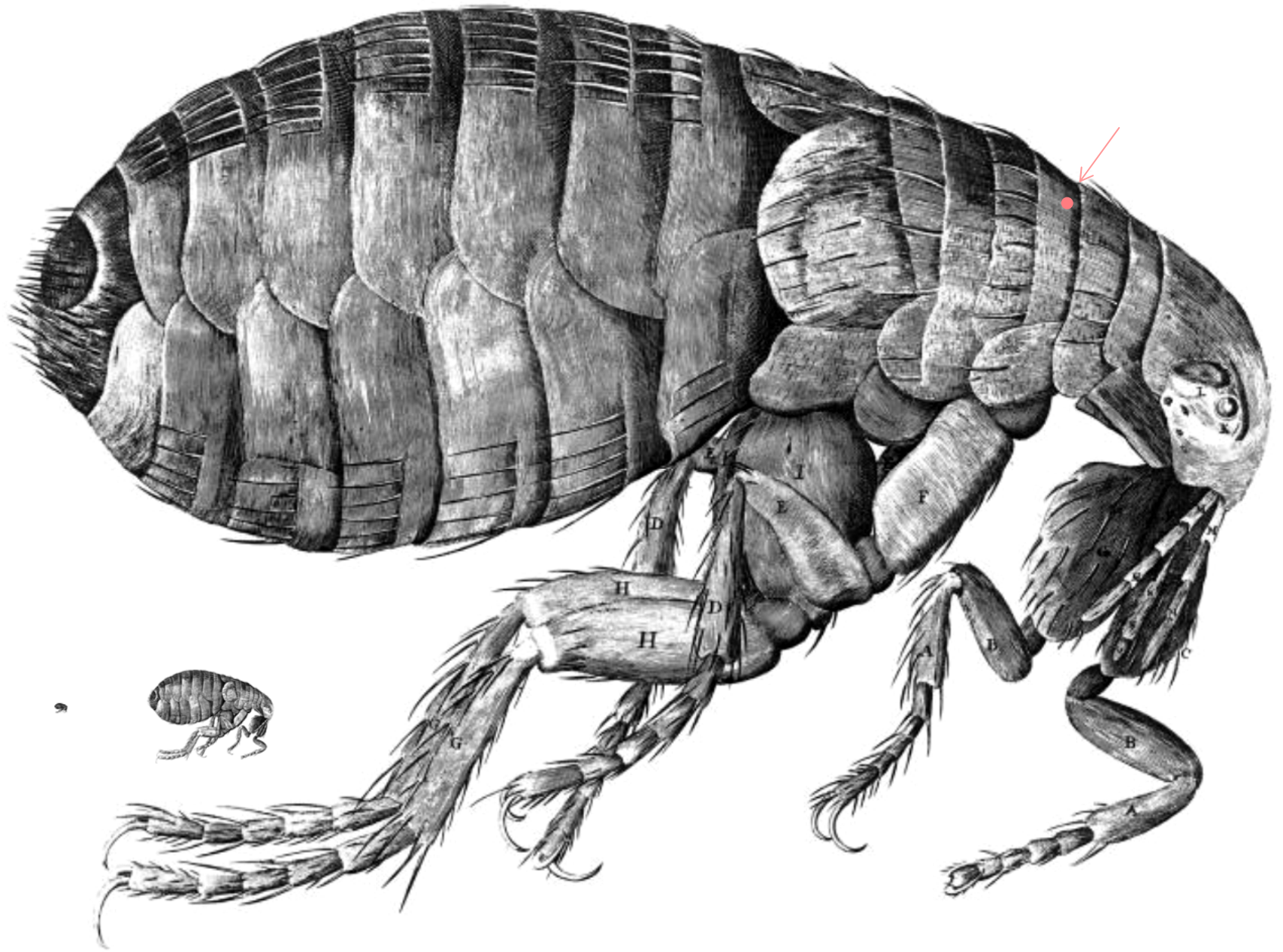
Bacterium

1x not magnified

10x

How big would the flea be 1000 x magnified? [N](#)





How much are the fleas magnified?